

ORCA CO., LTD.

3F X's Bldg., 26-22, Higashi-Ohi 5chome, Shinagawa-ku Tokyo, Japan
TEL:81-3-3471-8898 FAX:81-3-3471-8899 E-mail: systemdiv@orcajpn.co.jp



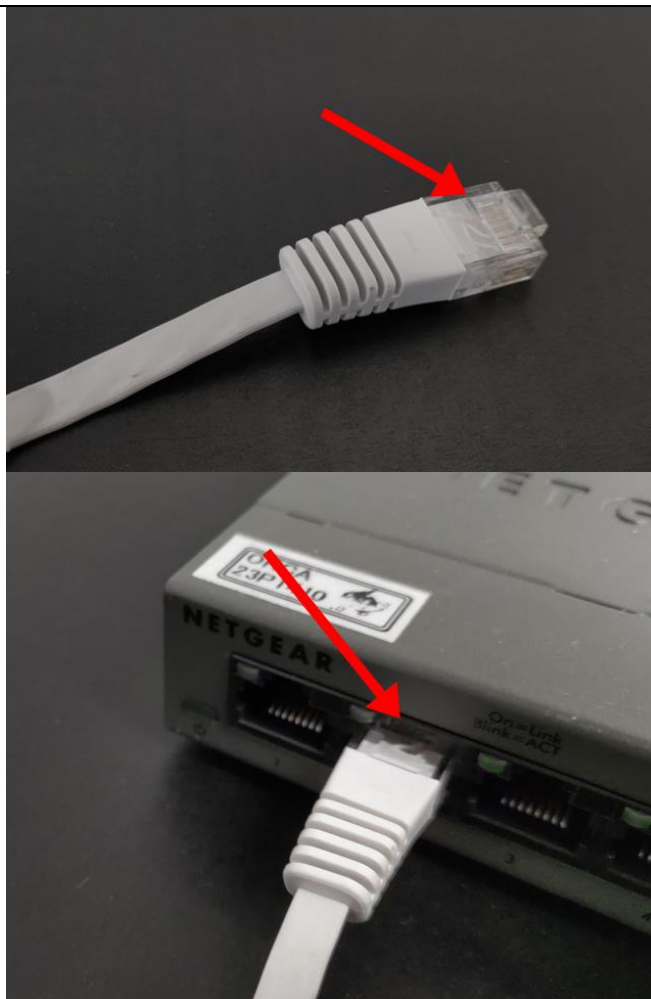
Thank you for your continuous support.

We would like to bring your attention to a recent issue on board the vessel caused by "old LAN cables."



Each company has set a useful life for the PCs on board and updates them regularly. However, while PCs are updated, the LAN cables connected to each PC are often reused, even though the cables are rather old. While LAN cables connected to server racks or hubs generally do not pose significant issues, the cables running from the wall LAN port to the PCs can accumulate damages over time due to frequent unplugging, plugging, or physical handling, which may lead to unexpected problems.

Examples of problems include:

Example 1



The locking tab being broken, causing vibration that leads to disconnection.

Example 2		Cables being stepped on by chairs or tables, leading to poor connections.
Example 3		Rough connector crimping: the internal wiring near is almost broken, causing the cable to lose signal when bent.

In such cases, the network becomes unstable with frequent connection drops that can lead not only to communication failures but also to data corruption during access.

We recommend replacing the LAN cables with new ones when exchanging PCs on board. Your attention to this matter would be greatly appreciated.